

FEDERATION-WIDE SITUATION REPORT

Kahramanmaraş Earthquake Operation



Turkish Red Crescent teams supporting the relief efforts on the ground. Photo credit: Turkish Red Crescent

SitRep n°	6	SitRep date	13 February 2023	Reporting period	10 - 12 February 2023
Operations Manager	Jamie Lesueur	Estimated number of people affected	16 Million People		
IFRC Operation n°	MDRTR004	Category allocated to the disaster or crisis	Red		
Total people targeted	Approximately 300,000 people	Start date of the operation	07/02/2023		
Total people reached (cumulative)	N/A	Expected end date	31/12/2023		
# of Rapid Response personnel and/or ERUs deployed (cumulative)	Six personnel (four in the pipeline), to be increased after initial assessment				
Geographical priority areas affected	Kahramanmaraş, Adıyaman, Kilis, Şanlıurfa, Diyarbakır, Adana, Hatay, Osmaniye, Gaziantep and Malatya				

Movement actors: Red Cross Red Crescent Movement partners

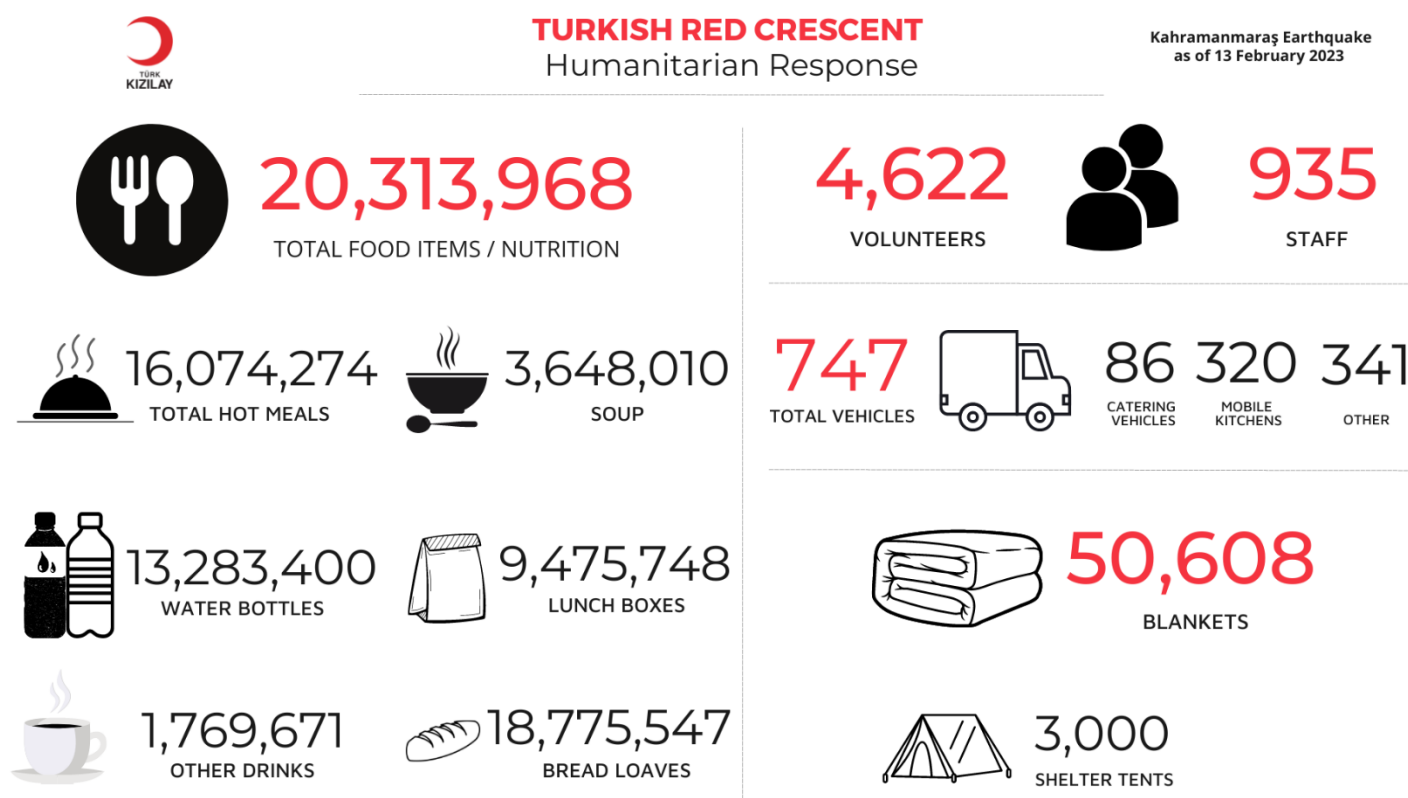
Other actors: Is there an assigned lead agency? Has UNDAC been deployed?

Which orgs have been assigned as clusters leads?

Norwegian Red Cross, American Red Cross, British Red Cross, German Red Cross, Livelihoods Centre (Spanish Red Cross) and ICRC provide support as part of the 2023 Country Operational Plan. See the section on Membership Coordination at the end of the report for further information IFRC has set up a disaster hub in Gaziantep to ensure coordination amongst the different actors in the field. A base camp expert, security officer, and two communication personnel recently joined the disaster hub.

The Turkish authorities lead the overall coordination and management of humanitarian assistance for disasters. Turkish Red Crescent is the responsible authority for the coordination of mass feeding services in the disaster area and main solution partner in this working group as part of the National Disaster Response Plan¹. A UNDAC team is deployed to the field. IFRC as part of its lead role in the shelter sector coordination in the international humanitarian coordination system, will be deploying a dedicated shelter coordination team to fulfil the requirements of the function. In addition to NATO and the European Union, offers of assistance from 70 countries reached Türkiye. 31 search and rescue teams and over 77 medical teams from different countries were mobilised towards the earthquake zones. A total of 238,204 professionals are employed in the works carried out in the earthquake zone. Upon the international call, 9,677 personnel from abroad were transferred to the disaster area.

General key highlights and main orientations of the action



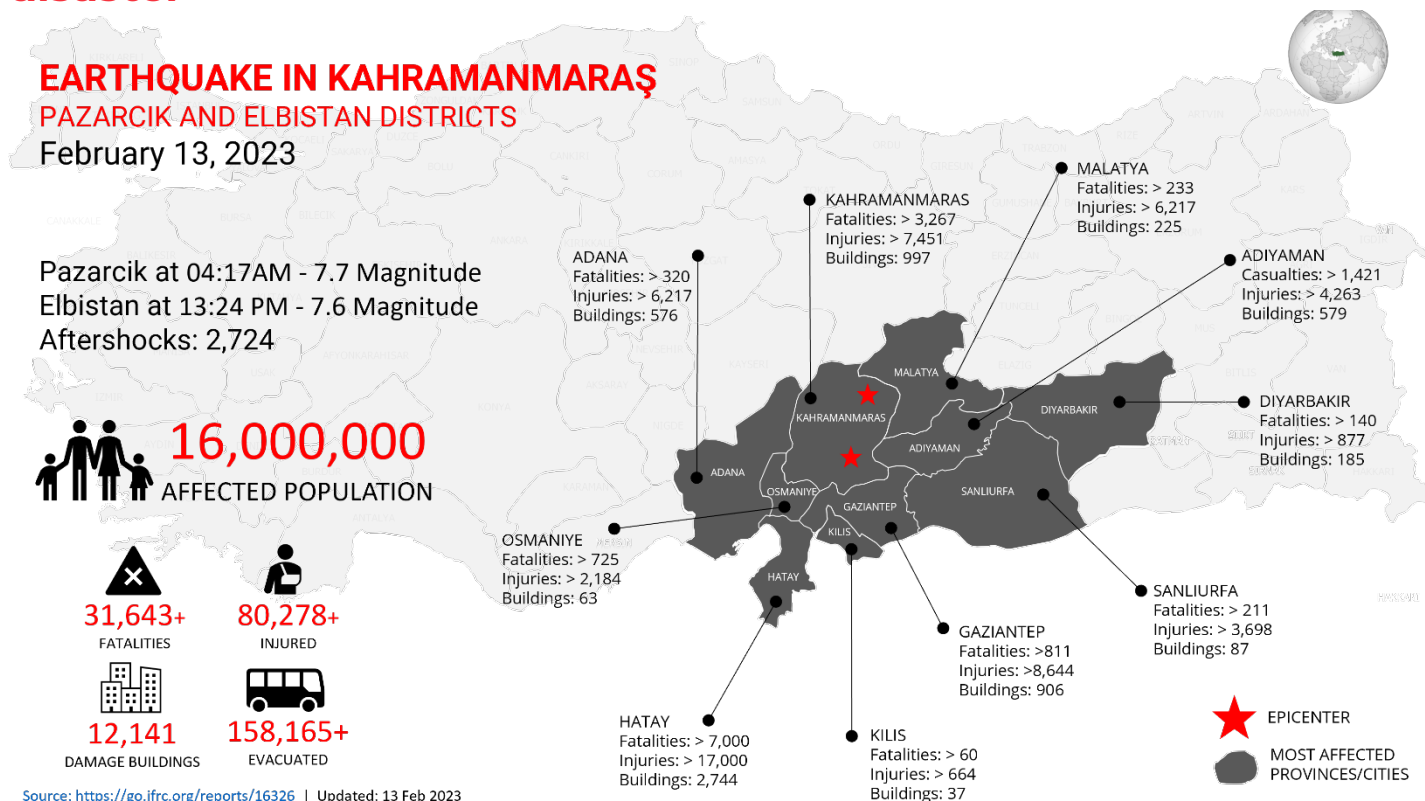
Operational constraints and risks

- **Harsh weather conditions due to peak winter season:** The initial earthquake struck at night during a multi-day winter weather event, leading to major issues with humanitarian access as roadways and airports impacted by the quakes were blocked by rain and snow. People trapped in collapsed buildings are unable to escape and the rescue window is getting smaller as each day passes. Cold temperatures below zero in the earthquake regions are expected to prevail within the next five days.

¹ https://www.afad.gov.tr/kurumlar/afad.gov.tr/e_Kutuphane/Planlar/TAMP.pdf

- Economic downturn and high inflation:** Official inflation in Türkiye has recently hit an all-time high of 85.5 per cent in October 2022, easing to 64.3 per cent in December 2022, with the Turkish Lira hitting a new record low after the earthquake, slipping to 18.85 per 1 USD. Because of these economic issues, cost of living has increased enormously, and food has grown more expensive and less affordable. This already-existing economic instability may grow much worse for those impacted by the earthquake and means communities in these areas may not be very resilient. Turkey's stock exchange suspended trading on Wednesday 8 February until 15 February, after its main index fell to 7 per cent (Reuters 08/02/2023). Estimated economic losses could be as high as 2 per cent of its GDP (USGS 06/02/2023). Another estimate points at USD 20 billion (Risk layer 06/02/2023). The ratings agency Fitch preliminary estimates that the earthquake could cause economic losses exceeding USD 4 billion (Fitch Ratings 09/02/2023). Findings from the field indicate that markets and shops lost their functionality after the earthquakes hit, but some informal markets opened a few days later selling a limited number of items at an even higher cost than their formal prices.
- Securing access to aid and services:** The Turkish media covered several incidents between armed groups in Hatay province. Although not clearly announced, reported violence may be related to incidents of looting. Turkish security forces patrol the area to maintain order. Risk of security incidents should be closely followed up on to prevent any harm to the affected population, staff and volunteers. Blocked roads due to damage or adverse weather conditions are slowing the emergency response and making it difficult to deliver aid to villages (STL, Emergency Sitrep, 11/02/2023).
- Health and hygiene:** Support to Life (STL) reports that limited access to hygiene facilities, clean/running water and uncollected garbage pose a high risk of an outbreak (Emergency Sitrep, 11/02/2023). According to the latest statement made by AFAD, 29,605 people lost their lives in 10 provinces affected by the earthquake and 99,156 were rescued. After the 7.7 magnitude earthquake, a total of 2,649 earthquakes have occurred so far. Damage assessment studies continue in the regions.
- Tents are being installed in the region to heal the wounded and to protect people from the cold winter conditions. In addition, sheltering services are provided in sports halls, mosques, dormitories and undamaged solid structures. A total of 166,095 people were involved in post-earthquake relief activities. In addition, thousands of volunteers provide support for the work conducted in the earthquake area.

Scope and scale, humanitarian conditions and evolution of disaster



The map used does not imply the expression of any opinion on the part of the International Federation of Red Cross and Red Crescent Societies or National Societies concerning the legal status of a territory or its authorities.

- Shelter and housing:** President Erdoğan announced plans to use hotels in Antalya, Alanya and Mersin as emergency shelters for people left homeless by the earthquake (Hurriyet Daily 08/02/2023, Middle East Eye 07/02/2023). In Diyarbakır, a camp settlement was established for people left homeless (STL 07/02/2023). In Killis, at least 6,000 people are staying in centers and 9,000 in Sanliurfa (IBC 09/02/2023). Extensive structural damage has been reported in Adana, Adiyaman, Diyarbakir, Gaziantep, Hatay, Kahramanmaras, Kilis, Malatya, Osmaniye and Sanliurfa provinces. As a result of the shelter activities carried out in the earthquake area, 175,960 tents and 1,507,494 blankets have been distributed. Around million 50 thousand citizens are being accommodated in temporary accommodation centers. Some mukhtars have specifically demanded containers instead of tents as they are a better fit for the winter conditions. Additionally, around 190k people have been evacuated outside of the region, 100k with relatives and 90k in refugee camps. The damage assessment work continues and people can return to their homes if they have been deemed safe. As for those whose homes are unsafe or have been demolished, the GoT is planning to rebuild houses for them within one year. At the end of the damage assessment studies, rent assistance will be provided. Related to this, these studies are carried out under the chairmanship of the Ministry of Environment and Urbanization and under the coordination of AFAD. People can follow up on these via the e-Government (e-devlet) website. Some mukhtars have specifically demanded containers instead of tents as they are a better fit for the winter conditions.
- Food:** The affected population directly impacted by the earthquake has lost assets and livelihoods in addition to the damage and loss of their shelters and household items. In a context of adverse weather conditions, pre-crisis socio-economic duress and high inflation rates, most vulnerable groups will struggle to access sufficient quantity of quality foods in the coming months. Access to drinking water is still a problem. Water cuts have been reported in Gaziantep (KI 07/02/2023). Preliminary reports from Support To Life (STL) indicate that there is no access to drinking water in Hatay. High drinking water needs were also observed in Diyarbakır (STL 07/02/2023).) In some provinces relief goods that arrive at the crisis desk's coordination are gathered in a warehouse in the industrial areas of the cities. Volunteers who came from nearby provinces distribute the relief goods. WFP is on the ground, in some of the most difficult- to-reach areas, distributing immediate food relief reaching around 142,000 people (February 10 (WFP). WFP is appealing for USD 77 million to provide assistance through food rations and hot meals for a total of 874,000 quake-affected people in Türkiye and Syria.
- Health:** High number of casualties will increase the burden on local health system capacities, which are directly affected by the Earthquake. Around 15 hospitals in the 10 provinces have been damaged, including three in Hatay (notably Antakya and İskenderun hospitals), according to the Health Ministry (AI Monitor 07/02/2023). Iskenderun State Hospital has completely collapsed with healthcare workers and patients trapped inside (HOPE 07/02/2023). Medical facilities in Sanliurfa, such as Eyyubiye Education Research Hospital and the Provincial Health Directorate were severely damaged (STL 07/02/2023). Even in functioning centers, lack of medicine, equipment and water is limiting care possibilities (AI Monitor 07/02/2023). As a result, many of the people rescued have been transferred to Istanbul or other cities (Anadolu 07/02/2023), as more than 49,133 people have reportedly been injured across Kahramanmaraş, Gaziantep, Şanlıurfa, Diyarbakır, Adana, Adiyaman, Malatya, Osmaniye, Hatay and Kilis, according to AFAD (AFAD #16 08/02/2023). People suffering from chronic diseases are likely as well to have their access to quality health care support limited in the coming months. Additionally, there have been reports of children suffering from diarrhea possibly because of their limited access to clean drinking water. Ministry of Health is active in the worst affected areas. In Kahramanmaraş, international EMTs are pulling out as no additional need is reported. But the need of staff for hospitals is a priority and deployment of ERU teams to support the HR capacity of the hospitals is under discussion. According to the field observations of IFRC teams, psychosocial support (PSS) is a substantial need and TRC is discussing with the Turkish Association for Psychologists for bilateral agreement possibility in specific areas. There is lack of hygiene due to inaccessibility of running water. The municipality has become nonfunctional, and the garbage of the city remains uncollected. For these reasons, Turkish Medical Association emphasized the risk of an outbreak in the coming weeks (STL, 11/02/2023).
- TRC is in the field with social service teams to alleviate the traumatic effects of the earthquake. Their social service teams conduct needs assessment, provide social services, first aid, and psychosocial services to heal the psychological wounds in the disaster area. Additionally, their psychosocial support teams are in the field

to support families to minimize the psychological impact of the disaster on the vulnerable groups who are likely to be affected the most in the event of an accident and disaster. TRC has carried out a blood shipment for the possible need for blood and plasma. As the responsible entity for blood donations in Türkiye, TRC delivered blood stocks to the Regional Blood Centers from 159 blood donation points across Türkiye for the possible need for blood and plasma. All national blood stocks in their blood banks have been mobilized for the initial shipments. TRC is also calling on people to donate blood for additional needs that may arise in the upcoming hours.

For more information on the scope, scale, humanitarian conditions and evolution of the disaster please check the latest [disaster brief](#).

Field Findings and Observations

IFRC field team visited Osmaniye and reported that the health and WASH response are coordinated by the Ministry of Health. In Osmaniye, there are six public hospitals, four private hospitals and seven mobile tent-based clinics in the field. One hospital is no longer functioning because of the earthquake. There are no EMTs in Osmaniye and health support is deemed sufficient for the time being.

Many residents of Osmaniye are moving out to the 106 nearby villages to stay with family for better safety and security. This has posed a challenge for monitoring and assessing the needs of the people in Osmaniye. TRC is planning to provide these villages with dried non-perishable food items as well as kitchen kits. There are eight camps in Osmaniye, including the Syrian refugee camps. TRC has presence in the majority of these camps. There is a common perception amongst communities that Osmaniye has received a lot of assistance compared to Kahramanmaras which is in more need of assistance. However, the communities have faith and trust in TRC to provide them with food items.

In Kahramanmaras, Masal Park is accommodating 1,500 people in tents. TRC provides food, relief items and PSS services. Five PSS volunteers will be establishing PSS services within the next 24-48 hour including a child-friendly space. TRC has printed out resources and has established a dedicated tent next to the main services in the camp. The Turkish psychological Association, Govail (IFRC established PSS services in Türkiye in the earthquakes of 1999) are coordinating to support TRC with PSS services with qualified psychologists.

TRC is also providing relief items, such as toiletries, clothing and blankets. The Masal camp is quite crowded and is in need of more WASH facilities. The camp has security presence.

On 12 February, IFRC field team visited the impacted area of Nurdağı in Gaziantep and discovered widespread damage to buildings, rendering majority of them uninhabitable. The destruction also extended to local hospitals, leaving some individuals struggling to access necessary medical care despite the presence of mobile health services. The harsh winter weather further compounded the difficulties faced by those affected, as inadequate sanitation facilities and a shortage of clean tap water posed additional challenges. kitchen facilities are set up to provide hot meals to those in need and a tent camp is established to provide shelter. The TRC PSS team has arrived on-site to offer aid and support to the impacted community.

National Society strategy & actions

Please see [here](#) the EA lunched through IFRC Secretariat.

Sectors of intervention/cross cutting key highlights.

- **Assessment:**

Key actions: TRC initially published a list of the most pressing needs in the earthquake affected areas which included ready-to-eat food, food parcels, baby food, NFIs, hygiene parcels, diaper, shelter items including blankets, sleeping bags, bed chairs and mattresses. The full list can be accessed through TRC website [here](#). An assessment technical working group led by OCHA has been formalized. All humanitarian entities, such as

IFRC, TRC, UNFPA, UNHCR, UNICEF, will collaborate to share all results of the ongoing and planned assessments. TRC rolled out a market assessment exercise in the affected areas to understand the current market conditions, identify the most critical needs, and assess the potential impact of the crisis on supply and demand. Data collection will be complete on Tuesday. IFRC M&E and IM will support on the analysis, mapping and report writing.

Anticipated challenges: Due to the intensity and scale of the disaster, conducting a full-blown assessment might be delayed. Teams are currently focusing on the most urgent needs including search and rescue.

- **National Society Capacity Strengthening:**

Key actions: Rapid refresher trainings in the form of ToTs are planned to be organized on the following subjects:

- PSS in emergencies refresher training with basic elements for a duration of one day or half-day. Target is around 10 persons and the team leaders of the PSS teams have been currently deployed to the field.
- Disaster response refresher training. Topics include PFA, distributions, monitoring, coordination. Target is around 15 team leaders of the DM teams.

Pending confirmation, DRC and Italian RC are able to facilitate a Base Camp with accommodation, office space, and meeting tents, together with kitchen.

Anticipated challenges: Challenges anticipated related to Base Camp due to the low temperatures including setting up WASH, shower and toilets and the heating of tents.

- **Planning, Monitoring, Evaluations and/or Reporting:**

Key actions: [Emergency Appeal \(EA\)](#) with a funding ask for CHF 120M together with the [Disaster Brief](#) was released on 7 February 2023. Planned activities in the coming period are as follows:

- Federation-wide situation reports
- Operational Strategy (OS)
- Revision of the EA/OS as needed
- Operations Updates
- Concept note for Real Time Evaluation

Anticipated challenges: Due the emergency stage, monitoring is being conducted by using the quantity of the humanitarian aid items provided. More structured monitoring and data collection on people reached and other achievements also including a qualitative approach will be set up once the situation allows.

- **Shelter:**

Key actions: 3,000 tents were transferred by TRC to the affected areas. Dispatch of sleeping kits from IFRC warehouses in Dubai and Las Palmas is under negotiation with TRC and IFRC Türkiye Delegation. TRC staff are working in coordination with AFAD to provide shelter to the affected areas. In addition to the tents transferred from the contingency stock, tents produced in TRC ateliers are also being delivered to the affected areas. TRC's atelier is also producing 60,000 family tents as a response to AFAD's request of production. IFRC is currently working on activating the shelter cluster to provide a coordination platform for the delivery of shelter and settlements assistance.

- **Livelihood & basic needs:**

Key actions: As of 12 February, TRC dispatched 320 mobile kitchens/soup kitchens/bakeries/field kitchens and 20,313,968 total food assistance including 16,074,274 hot meals, 3,648,010 soups, 9,475,748 lunch boxes, and 1,769,671 drinks which were delivered to the affected people. TRC has also located food distribution points (mobile kitchens, mobile bakery trucks, catering vehicles and field kitchens) in ten affected provinces. To date, 50,608 blankets were distributed to the people in the affected areas.

- **Health:**

Key actions: There was a call for support to donate blood and many people have responded to this from all parts of Türkiye. 159 blood donation points are active across the country to respond to the needs in the affected areas by the earthquake. The donations have slowed down as there is an existing blood stock planned to be used for the time being.

- **WASH:**

Key actions: TRC distributed 13,283,400 water bottles in the affected areas. Dispatch of hygiene and baby hygiene kits from IFRC warehouses in Dubai and Las Palmas is under negotiation with TRC and IFRC Türkiye Delegation. IFRC is deploying WASH coordinator to support TRC in the assessment, in parallel checking the WASH capacities through the membership resources. IFRC field teams have observed that there is pressing

need for mobile WASH in the affected areas. There is limited access to toilets and no running tap water. The GoT is currently setting up containers with mobile toilets and WASH facilities but there is a need for more. The WASH response is being led by the city council in collaboration with the Ministry of Environment.

Community Engagement and Accountability (CEA):

Key actions: The 168 call center has been established in its temporary place in Ankara and has started to receive calls. It is working as a 2-hour open call center and is prioritizing calls regarding the earthquake. There are 10 active operators who are working in five (Turkish, English, Arabic, Farsi, Pashto) languages and in two shifts. Furthermore, infographics on announcements by relevant authorities and TRC are being prepared and distributed through social media channels. Also, active rumour tracking is being done by CEA staff on rumours pertaining to important announcements made by government agencies such as AFAD and their verification.

Corporate services key highlights

Communications.

IFRC and TRC rapidly assigned all their communications teams for managing emergency communications. Both teams accept media interviews from all over the world. IFRC communications team and leadership only takes international media interviews to complement the TRC's efforts for providing visibility to the operations, increasing donations and disseminating accurate information on a global scale. Both teams are actively using their social media platforms to engage with potential donors, volunteers and to disseminate accurate information to the general public. IFRC is scaling up its communications with additional human resources and increased social media activity as well as increased media engagements. IFRC currently has two communications delegates on the ground; this number will increase in the upcoming days due to the communications needs on the ground.

Logistics.

- IFRC Global stock list for the available stocks was shared with TRC. TRC specified immediate needs for IKDs. Logistics details are to be received from TRC (entry points, warehouse details, shipping details). IFRC will proceed with launching a mobilization table based on the NFI needs. TRC has expressed the need for vehicles. TRC will confirm the priority of NFIs and vehicle needs. IFRC Global logistics team is working closely with long-term strategic partners for any pro bono transport support which might be extended to IFRC.
- In line with the Emergency Appeal seeking support for people affected by the earthquake in Türkiye, the Mobilization Table was launched on 08 February 2023 to seek In Kind (IKD) support. The Austrian Red Cross is ready to pledge 1 million Euros in cash to support the procurement of the following items:
 - Hygiene parcels – 3,000 pieces
 - Jerry cans - 26,100 pieces
 - Family tents – 500 pieces
 - Blankets – 40,000 pieces
 - Kitchen sets – 9,500 pieces
- Urgent operational needs are evolving as TRC is obtaining more information. The Mobilization table will be updated as needed.
- The IFRC country delegation and operation is currently working on mobilizing some of immediately needed relief items through IFRC Global logistics setup with the support of its Regional Logistics Unit based in Budapest.
- Through this mobilization table outstanding needs are to be addressed. The pledging towards these items could either be in the form of in-kind donation or cash contribution to support the procurement of these items by IFRC.
- IFRC is currently procuring the following items and quantities:
 - High thermal blankets – 4,670 pieces
 - Medium thermal blankets – 35,648 pieces
 - Body bag – 500 pieces
 - Household kits, essential items – 2,050 pieces
 - Shelter tool kit – 9,200 pieces

○ Tarpaulins – 10,000 pieces

- **Safety & Security:**

The security team is monitoring the situation and making security recommendations to staff. Movement control measures are in place.

Role Profile	Status	Deploying Entity
Heops	In field	IFRC
Operations Management	In field	IFRC
Health in Emergencies	In field	IFRC
Membership Coordination (x2)	In field	IFRC
Communications	In field	IFRC
Shelter Coordinator	Incoming	IFRC
Logistics Coordinator (x2)	Incoming	IFRC
Field Coordinator	Incoming	IFRC

Membership Coordination

Currently, up to eight National Societies have deployed teams to Türkiye, almost exclusively in SAR and EMT, mostly deployed together with respective governments. TRC has acknowledged these deployments that operationally fall under the coordination of the authorities. Most of these teams have left or are in the process of leaving in the coming days as SAR activities draw to a close. TRC has been contacted by more than 100 members expressing support and sending their condolences, providing financial support and offering resources and teams. TRC has expressed a strong wish to receive unearmarked funding support as a priority, given the dynamics of the situation and operation as well as evolving plans. TRC is currently unable to accommodate personnel from member National Societies for visits or other purposes. Surge Membership Coordinators are in place in Ankara and are working closely with TRC to facilitate engagement, offers and information requests. A first iteration of an Information Note on Membership Coordination has been sent out to frame the coordination and cooperation. Membership Coordination messages are being sent out for wide circulation, consolidating information, including this Situational Report and relevant IM products with reference to the [GO platform](#). A membership coordination and information exchange call took place on February 13.

All members are expected to respect the [Principles and Rules for Red Cross and Red Crescent Humanitarian Assistance](#), ensuring that TRC agrees with any assistance that is provided and actioned. The primary channel of international support is the IFRC and the Emergency Appeal.

IFRC Membership coordinators in Türkiye can be reached on rrmembershipco.turkiye@ifrc.org and via WhatsApp on +905331457512.

References & Links

[Emergency Appeal](#)

[Disaster Brief](#)

[IDRL and Auxiliary Role advocacy fact sheet, Turkey](#)

[Turkiye-Earthquake Estimated Affected Population](#)

[TUR: Earthquake - 2023-02 - TUR: Earthquake - 2023-02 - Kahramanmaras Earthquake #2 \(2023-02-06\)](#)

[TUR: Earthquake - 2023-02 - Kahramanmaras Earthquake](#)

[Contribution List](#)

[Link to IFRC Emergency Page](#)

Contact information

For further information, specifically related to this operation please contact:

At the Turkish Red Crescent

- Kaan Saner, Director of International Policies and Partnerships, kaans@kizilay.org.tr, +90 312 203 4700
- Merve Yasayan, Head of Movement Relations and Partnerships, merve.yasayan@kizilay.org.tr

At the IFRC

- **IFRC Country Delegation (or Country Cluster Delegation):**
 - Ruben Cano, Head of Country Delegation, Ruben.Cano@ifrc.org
 - Jamie Lesueur, Head of Emergency Operations, jamie.lesueur@ifrc.org
- **IFRC Regional Office for Europe Operational Coordination:**
 - Jennifer Vibert, Operations Coordination Manager; Jennifer.Vibert@ifrc.org
- **IFRC Geneva:** Antoine Belair, Senior Officer- Operations Coordination, Antoine.Belair@ifrc.org
- **Membership Coordination:** Andreas Weissenberg, Regional Head, Health, Disasters, Climate & Crises, andreas.weissenberg@ifrc.org

For IFRC Resource Mobilisation and Pledges support:

- **IFRC Regional Office for Europe:** Andrej Naricyn, Regional Head of Strategic Engagement and Partnerships, Andrej.Naricyn@ifrc.org

For In-Kind Donations and Mobilisation table support:

- **Humanitarian Services and Supply Chain Management:** Stefano Biagiotti, Head of Global Humanitarian Services & Supply Chain Management, EU, stefano.biagiotti@ifrc.org
- **Logistics Coordinator:** Riku Aleksi Assamaki, riku.assamaki@ifrc.org