

Kahramanmaraş Earthquake Operation

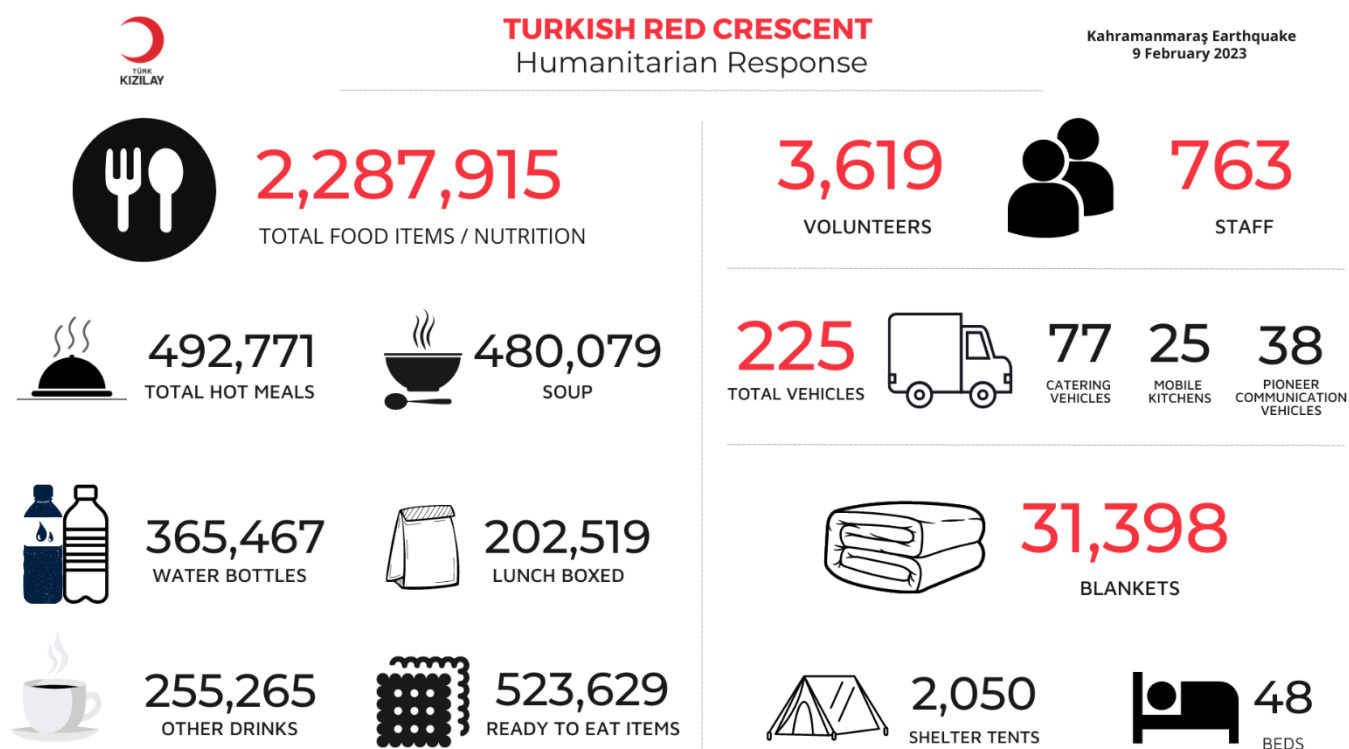


Turkish Red Crescent teams supporting the relief efforts on the ground. Photo credit: Turkish Red Crescent

SitRep n°	3	SitRep date	10 February 2023	Reporting period	7 - 9 February 2023
Operations Manager	Jamie Lesueur	Estimated number of people affected	16 Million People		
IFRC Operation n°	MDRTR004	Category allocated to the disaster or crisis	Red		
Total people targeted	Approximately 300,000 people	Start date of the operation	07/02/2023		
Total people reached (cumulative)	N/A	Expected end date	31/12/2023		
# of Rapid Response personnel and/or ERUs deployed (cumulative)	Six personnel (four in the pipeline), to be increased after initial assessment				
Geographical priority areas affected	Kahramanmaraş, Adıyaman, Kilis, Şanlıurfa, Diyarbakır, Adana, Hatay, Osmaniye, Gaziantep and Malatya				
Movement actors: Red Cross Red Crescent Movement partners	Norwegian Red Cross, American Red Cross, British Red Cross, German Red Cross, Livelihoods Centre (Spanish Red Cross) and ICRC provide support as part of the 2023 Country Operational Plan. IFRC teams have been approached by				

	<p>almost 20 National Societies offering their assistance in different thematic areas. The Membership Coordination mechanism is established within the IFRC team in Ankara with two surge delegates. The team will facilitate the communication with RCRC members and address the requests and needs in coordination with TRC. See section on membership coordination at the end of the report.</p>
<p>Other actors: Is there an assigned lead agency? Has UNDAC been deployed? Which orgs have been assigned as clusters leads?</p>	<p>The Turkish authorities lead the overall coordination and management of humanitarian assistance for disasters. Turkish Red Crescent is the responsible authority for the coordination of nutrition services in the disaster area and main solution partner in the Nutrition Group as part of the National Disaster Response Plan¹. An UNDAC team is deployed to the field. In addition to NATO and the European Union, offers of assistance from 70 countries reached Türkiye. 30 search and rescue teams and medical teams from 21 European countries were mobilised towards the earthquake zones. Search and rescue teams from different countries reached a total of 5,000 people.</p>

General key highlights and main orientations of the action



Operational constraints and risks

- Harsh weather conditions due to peak winter season:** The initial earthquake struck at night during a multi-day winter weather event, leading to major issues with humanitarian access as roadways and airports impacted by the quakes were blocked by rain and snow. People trapped in collapsed buildings are unable to escape and are not likely to survive long periods of time due to low temperatures. On the fifth day of the earthquake, the General Directorate of Meteorology (MGM) conveyed the weather forecast reports. In some earthquake regions where search and rescue operations are carried out, temperatures will drop below 0 degrees today.

¹ https://www.afad.gov.tr/kurumlar/afad.gov.tr/e_Kutuphane/Planlar/TAMP.pdf

- MGM stated that frost and icing are expected in many parts of the country today
- The lowest temperature in Malatya is expected to be -11 degrees and the highest -1 degrees
- The lowest temperature in Kahramanmaraş is -4 degrees and the highest is 4 degrees
- The temperatures in Hatay will be -1 degrees at the lowest and 10 degrees at the highest
- In Adiyaman, the temperatures will be the lowest -3 degrees and the highest 7 degrees.
- The temperatures in Osmaniye will be -13 degrees at the lowest and 13 degrees at the highest.
- The temperatures in Gaziantep will be -2 degrees at the lowest and 6 degrees at the highest.
- **Economic downturn and high inflation:** Official inflation in Türkiye has recently hit an all-time high of 85.5 per cent in October 2022, easing to 64.3 per cent in December 2022, with the Turkish Lira hitting a new record low after the earthquake, slipping to 18.85 per 1 USD. Because of these economic issues, cost of living has increased enormously, and food has grown more expensive and less affordable. This already-existing economic instability may grow much worse for those impacted by the earthquake and means communities in these areas may not be very resilient. Turkey's stock exchange suspended trading on Wednesday 8 February until 15 February, after its main index fell to 7 per cent (Reuters 08/02/2023). Estimated economic losses could be as high as 2 per cent of its GDP (USGS 06/02/2023). Another estimate points at USD 20 billion (Risk layer 06/02/2023). The ratings agency Fitch preliminary estimates that the earthquake could cause economic losses exceeding USD 4 billion (Fitch Ratings 09/02/2023).
- Updated **casualty reports** indicate at least 7,108 deaths and 37,011 injured. The death toll will almost certainly increase in the coming hours/days. As a result of the search and rescue efforts, more than 8 thousand people were rescued from the rubble. A total of 60,218 people were involved in post-earthquake relief activities. In addition, thousands of volunteers provide support for the work conducted in the earthquake area.

Scope and scale, humanitarian conditions and evolution of disaster

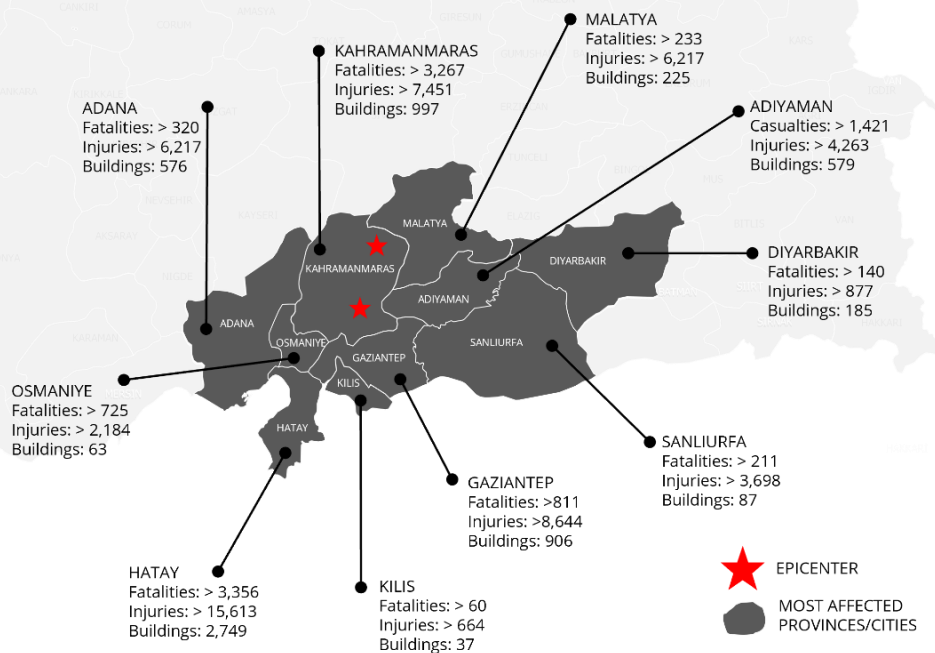
EARTHQUAKE IN KAHRAMANMARAŞ PAZARCIK AND ELBISTAN

February 6, 2023

Pazarcik at 04:17AM - 7.7 Magnitude
Elbistan at 13:24 PM - 7.6 Magnitude
Aftershocks: 648

16,000,000
AFFECTED POPULATION

17,674+ FATALITIES
70,347+ INJURIES
72,879+ RESCUED
6,444 DAMAGE BUILDINGS



Source: <https://go.ifrc.org/reports/16326> | Updated: 8 Feb 2023

The map used does not imply the expression of any opinion on the part of the International Federation of Red Cross and Red Crescent Societies or National Societies concerning the legal status of a territory or its authorities.

- **Shelter and housing:** President Erdoğan announced plans to use hotels in Antalya, Alanya and Mersin as emergency shelters for people left homeless by the earthquake (Hurriyet Daily 08/02/2023, Middle East Eye 07/02/2023). In Diyarbakır, a camp settlement was established for people left homeless (STL 07/02/2023). In Killis, at least 6,000 people are staying in centers and 9,000 in Sanliurfa (IBC 09/02/2023). Extensive structural damage has been reported in Adana, Adiyaman, Diyarbakir, Gaziantep, Hatay, Kahramanmaras, Kilis, Malatya, Osmaniye and Sanliurfa provinces. As a result of the damage assessments, the number of buildings that were reported as damaged is 11,302 and the number of buildings that were demolished is 5,775. As a result of the shelter activities carried out in the earthquake area, 70,818 tents have been installed so far.
- **Food:** Affected population directly impacted by the earthquake have lost assets and livelihoods in addition to the damage and loss of their shelters and household items. In a context of adverse weather conditions, pre-crisis socio-economic duress and high inflation rates, most vulnerable groups will struggle to access sufficient quantity of quality foods in the coming months despite the market system being operational and soon to resume its full functionality. Access to drinking water is still a problem. Water cuts have been reported in Gaziantep (KI 07/02/2023). Preliminary reports from Support To Life (STL) indicate that there is no access to drinking water in Hatay. High drinking water needs were also observed in Diyarbakır (STL 07/02/2023).
- **Health:** High number of casualties will increase the burden on local health system capacities, which are directly affected by the Earthquake. Around 15 hospitals in the 10 provinces have been damaged, including three in Hatay (notably Antakya and İskenderun hospitals), according to the Health Ministry (AI Monitor 07/02/2023). Iskenderun State Hospital has completely collapsed with healthcare workers and patients trapped inside (HOPE 07/02/2023). Medical facilities in Sanliurfa, such as Eyyubiye Education Research Hospital and the Provincial Health Directorate were severely damaged (STL 07/02/2023). Even in functioning centers, lack of medicine, equipment and water is limiting care possibilities (AI Monitor 07/02/2023). As a result, many of the people rescued have been transferred to Istanbul or other cities (Anadolu 07/02/2023), as more than 49,133 people have reportedly been injured across Kahramanmaraş, Gaziantep, Şanlıurfa, Diyarbakır, Adana, Adiyaman, Malatya, Osmaniye, Hatay and Kilis, according to AFAD (AFAD #16 08/02/2023). People suffering from chronic diseases are likely as well to have their access to quality health care support limited in the coming months.

For more information on the scope, scale, humanitarian conditions and evolution of the disaster please check the latest [disaster brief](#).

National Society strategy & actions

Please see [here](#) the EA lunched through IFRC Secretariat.

Sectors of intervention/cross cutting key highlights.

- **Assessment:**
Key actions: TRC initially published a list of the most pressing needs in the earthquake affected areas which included ready-to-eat food, food parcels, baby food, NFIs, hygiene parcels, diaper, shelter items including blankets, sleeping bags, bed chairs and mattresses. The full list can be accessed through TRC website [here](#).
Anticipated challenges: Due to the intensity and scale of the disaster, conducting a full-blown assessment might be delayed. Teams are currently focusing on the most urgent needs including search and rescue.
- **National Society Capacity Strengthening:**
Key actions: Rapid refresher trainings in the form of ToTs are planned to be organized on the following subjects:
 - PSS in emergencies refresher training with basic elements for a duration of one day or half-day. Target is around 10 persons and the team leaders of the PSS teams have been currently deployed to the field.
 - Disaster response refresher training. Topics include PFA, distributions, monitoring, coordination. Target is around 15 teams leaders of the DM teams.

Pending confirmation, DRC is able to facilitate a Base Camp with accommodation, office space, and meeting tents, together with kitchen.

Anticipated challenges: Challenges anticipated related to Base Camp due to the low temperatures including setting up WASH, shower and toilets and the heating of tents.

- **Planning, Monitoring, Evaluations and/or Reporting:**

Key actions: [Emergency Appeal](#) with a funding ask for CHF 120M together with the [Disaster Brief](#) was released on 7 February 2023. Planned activities in the coming period are as follows:

- Federation-wide situation reports – daily in the first week and two days until the end of second week of the operation
- Revision of the EA as needed
- Operational Strategy Document in seven days
- Operations Update 1 by 28 February
- Concept note for Real Time Evaluation

Anticipated challenges: Due the emergency stage, monitoring is being conducted by using the quantity of the humanitarian aid items provided. More structured monitoring and data collection on people reached and other achievements also including a qualitative approach will be set up once the situation allows.

- **Shelter:**

Key actions: 2,006 tents were transferred by TRC to the affected areas. Dispatch of sleeping kits from IFRC warehouses in Dubai and Las Palmas is under negotiation with TRC and IFRC Türkiye Delegation. 4,000 TRC staff are working in coordination with AFAD to provide shelter to the affected areas. In addition to the tents transferred from the contingency stock, tents produced in TRC ateliers are also being delivered to the affected areas.

- **Livelihood & basic needs:**

Key actions: TRC dispatched 204 mobile kitchens/soup kitchens/bakeries, 1,135,225 food items, 464,062 snacks, 6,000 kitchen kits to the affected areas. TRC has also located food distribution points (mobile kitchens, mobile bakery trucks, catering vehicles and field kitchens) in nine affected provinces (Adana, Hatay, Gaziantep, Kahramanmaraş, Diyarbakır, Malatya, Osmaniye and Şanlıurfa). To date, 25,694 blankets were distributed to the people in the affected areas.

- **Health:**

Key actions: There was a call for support to donate blood and many people have responded to this from all parts of Türkiye. The donations have slowed down as there is an existing blood stock planned to be used for the time being.

- **WASH:**

Key actions: TRC distributed 212,205 water bottles in the affected areas. Dispatch of hygiene and baby hygiene kits from IFRC warehouses in Dubai and Las Palmas is under negotiation with TRC and IFRC Türkiye Delegation.

Community Engagement and Accountability (CEA):

Key actions: The 168 call center has been established in its temporary place in Ankara and has started to receive calls. It is working as a 2-hour open call center and is prioritizing calls regarding the earthquake. There are 10 active operators who are working in five (Turkish, English, Arabic, Farsi, Pashto) languages and in two shifts. Furthermore, infographics on announcements by relevant authorities and TRC are being prepared and distributed through social media channels.

Corporate services key highlights

Communications.

TRC assigned all their communications teams for managing emergency communications. Media team is accepting media interviews from all over the world with support from IFRC communications team. IFRC communications team and leadership also started to take interview requests in several languages. Both IFRC and TRC are actively using their social media platforms to engage with potential donors, volunteers and to disseminate accurate information to the general public.

- **Logistics:**

- IFRC Global stock list for the available stocks was shared with TRC. TRC specified immediate needs for IKDs. Logistics details are to be received from TRC (entry points, warehouse details, shipping details). IFRC will proceed with launching a mobilization table based on the NFI needs. TRC has expressed the need for vehicles. TRC will confirm the priority of NFIs and vehicle needs. IFRC Global logistics team is working closely with long-term strategic partners for any pro bono transport support which might be extended to IFRC.
 - In line with the Emergency Appeal seeking support for people affected by the earthquake in Türkiye, the Mobilization Table was launched on 08 February 2023 to seek In Kind (IKD) support. The Austrian Red Cross is ready to pledge 1 million Euros in cash to support the procurement of the following items:
 - Hygiene parcels – 3,000 pieces
 - Jerry cans - 26,100 pieces
 - Family tents – 500 pieces
 - Blankets – 40,000 pieces
 - Kitchen sets – 9,500 pieces
 - Urgent operational needs are evolving as TRC is obtaining more information. The Mobilization table will be updated as needed.
 - The IFRC country delegation and operation is currently working on mobilizing some of immediately needed relief items through IFRC Global logistics setup with the support of its Regional Logistics Unit based in Budapest.
 - Through this mobilization table outstanding needs are to be addressed.
- The pledging towards these items could either be in the form of in-kind donation or cash contribution to support the procurement of these items by IFRC.
- IFRC is currently procuring the following items and quantities:
 - High thermal blankets – 4,670 pieces
 - Medium thermal blankets – 35,648 pieces
 - Body bag – 500 pieces
 - Household kits, essential items – 2,050 pieces
 - Shelter tool kit – 9,200 pieces
 - Tarpaulins – 10,000 pieces

- **Safety & Security:**

The security team is monitoring the situation and gathering information to analyze the possible security implications of the earthquake. IFRC will update the security plan and regulations for operations area.

Role Profile	Status	Deploying Entity
Heops	In field	IFRC
Operations Management	In field	IFRC
Health in Emergencies	In field	IFRC
Membership Coordination (x2)	In field	IFRC
Communications	In field	IFRC

Membership Coordination

Membership Coordinators are in place in Ankara and will work closely with TRC to facilitate engagement, offers and information requests. Contacts will be shared with the membership. All members are expected to respect the [Principles and Rules for Red Cross and Red Crescent Humanitarian Assistance](#), ensuring that TRC agrees with any assistance that is provided and actioned.

References & Links

[Emergency Appeal](#)

[Disaster Brief](#)

[IDRL and Auxiliary Role advocacy fact sheet, Turkey](#)

[Turkiye-Earthquake Estimated Affected Population](#)

[TUR: Earthquake - 2023-02 - TUR: Earthquake - 2023-02 - Kahramanmaras Earthquake #2 \(2023-02-06\)](#)

[TUR: Earthquake - 2023-02 - Kahramanmaras Earthquake](#)

[Contribution List](#)

[Link to IFRC Emergency Page](#)

Contact information

For further information, specifically related to this operation please contact:

At the Turkish Red Crescent

- Kaan Saner, Director of International Policies and Partnerships, kaans@kizilay.org.tr, +90 312 203 4700
- Merve Yasayan, Head of Movement Relations and Partnerships, merve.yasayan@kizilay.org.tr

At the IFRC

- **IFRC Country Delegation (or Country Cluster Delegation):**
 - Ruben Cano, Head of Country Delegation, Ruben.Cano@ifrc.org
 - Sandra Arbid, Deputy Operations Coordinator, sandra.arbid@ifrc.org
- **IFRC Regional Office for Europe Operational Coordination:**
 - Jennifer Vibert, Operations Coordination Manager; Jennifer.Vibert@ifrc.org
- **IFRC Geneva:** Antoine Belair, Senior Officer- Operations Coordination, Antoine.Belair@ifrc.org

For IFRC Resource Mobilisation and Pledges support:

- **IFRC Regional Office for Europe:** Andrej Naricyn, Regional Head of Strategic Engagement and Partnerships, Andrej.Naricyn@ifrc.org

For In-Kind Donations and Mobilisation table support:

- **Humanitarian Services and Supply Chain Management:** Stefano Biagiotti, Head of Global Humanitarian Services & Supply Chain Management, EU, stefano.biagiotti@ifrc.org
- **Logistics Coordinator:** Riku Aleksis Assamaki, riku.assamaki@ifrc.org