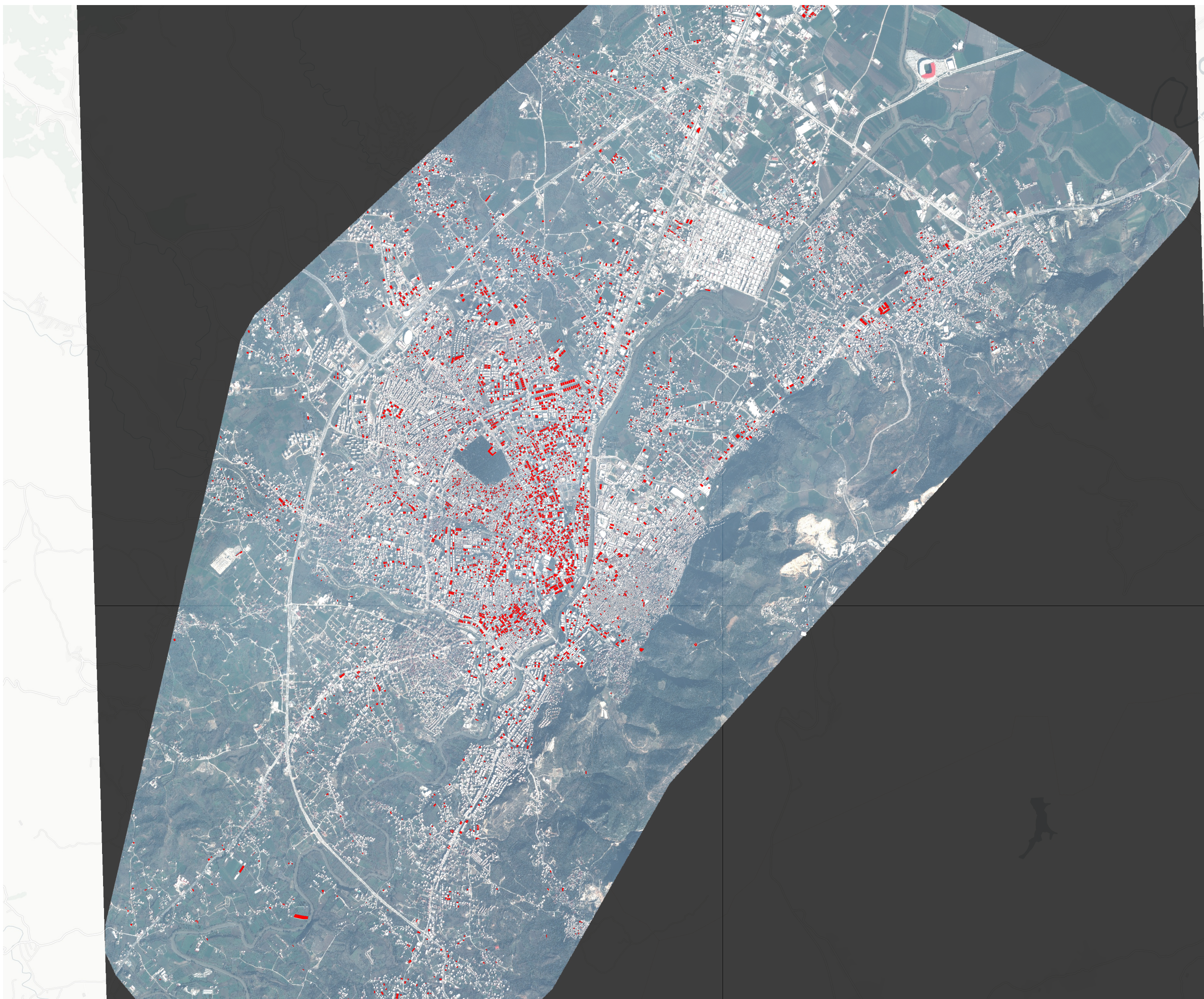


Antakya - Damage assessment

Turkey and Syria earthquake 2023.

Based on a comparison of satellite imagery before (10/Mar/2020) and after (08/Feb/2023) the earthquake. Source: Airbus Foundation.



This analysis is a result of an AI-based damage assessment, code and models are openly accessible at <https://github.com/rodekruis/ada-collection>.
Data sources: Airbus (imagery), OpenStreetMap (building footprint).
Created by 510 an initiative of the Netherlands Red Cross, 10 Feb 2023.

The maps used do not imply the expression of any opinion on the part of the International Federation of Red Cross and Red Crescent Societies or National Societies concerning the legal status of a territory or of its authorities.

Key figures

~3600 buildings with major damage or destroyed (9%)
112 km² area assessed

Legend

- building damage
 - no or minor damage
 - major damage or destroyed
- background: post-disaster satellite imagery

